

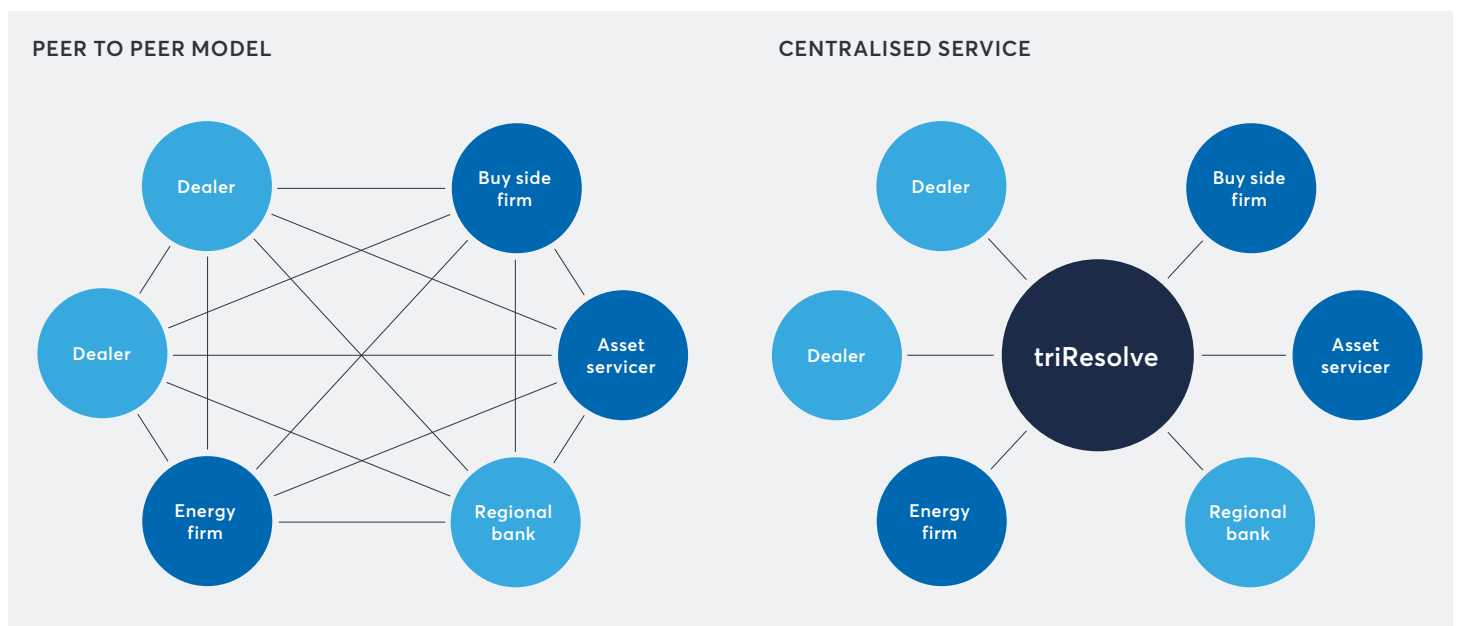
triResolve

THE CENTRAL SERVICE FOR DERIVATIVES PORTFOLIO RECONCILIATION.

triResolve enables market participants to validate and align their positions and exposure to reduce credit counterparty risk.

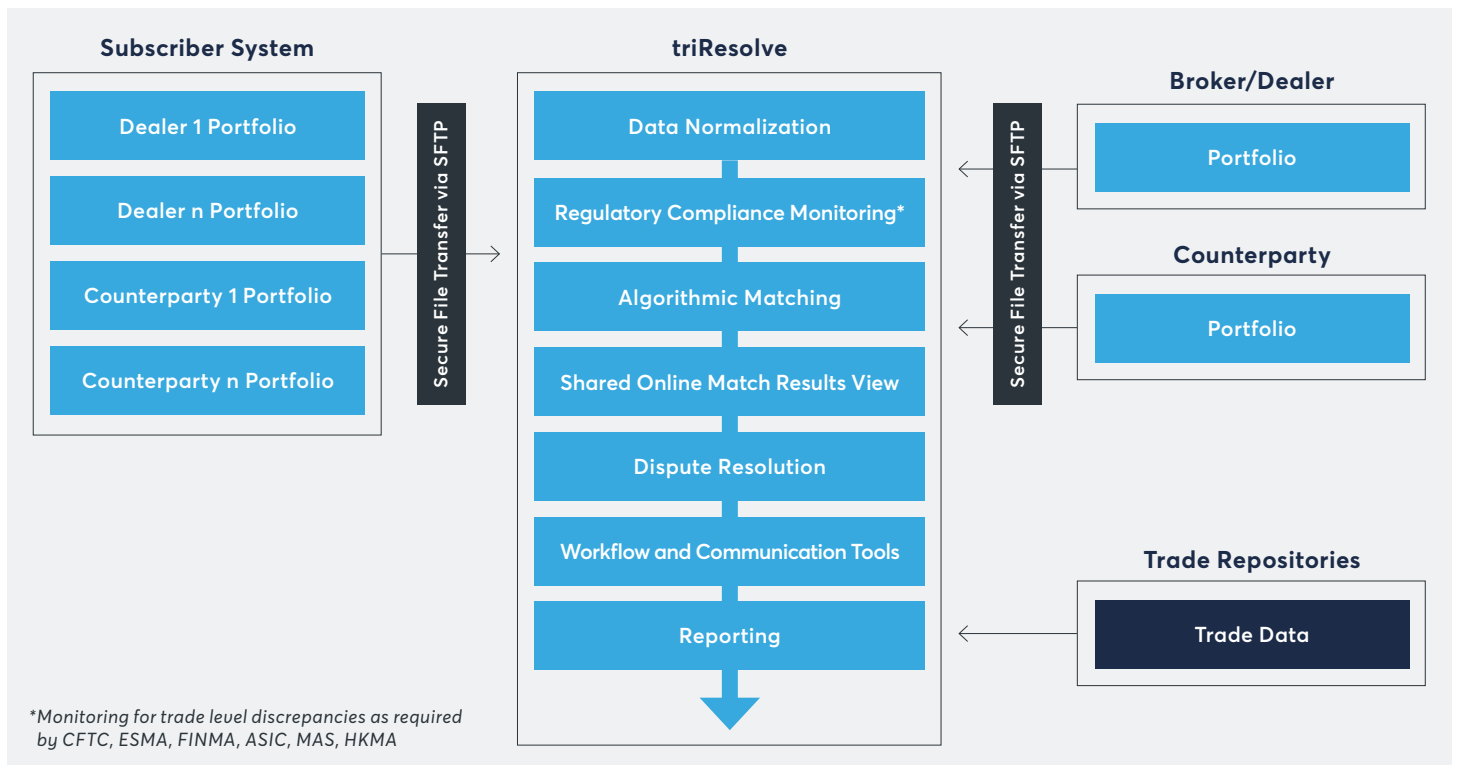
The market leading solution

triResolve reconciles over 90% of all bilateral OTC derivatives across 2,000+ groups, which means all your counterparties are in one place. You benefit from a centralised service model with a global network where you and your counterparties share the same view and work together to resolve any differences.



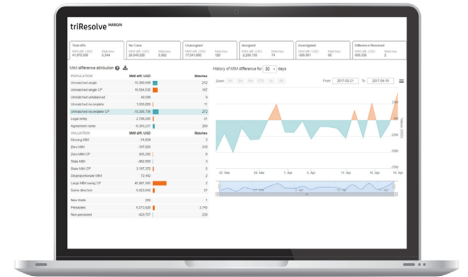
How does it work?

- Send your data in any format
- We normalise the data and reconcile all fields using algorithmic matching
- Results are shared bilaterally online
- Use the flexible and functional triResolve platform to identify, track, investigate, and help resolve discrepancies



Cutting edge analytics

Flexible reporting and automatic dispute attribution show you where in your portfolio you have meaningful differences and automatically determine what is driving them.



What are the benefits?

- **Cost effective:** Pay as you go with no hidden fees via our transparent pricing model
- **Rapid onboarding:** You can be up and running on our web-based service in a day with no installation required
- **All file types supported:** We normalise data in any submitted format
- **All asset classes and products:** Support for bilateral and cleared OTC derivatives, repo, collateral holdings, and ETDs reconciliation
- **Advanced analytics and reporting:** Automatic dispute attribution and case management enables intelligent and auditable dispute resolution
- **Facilitates regulatory compliance:** Focusing on exceptions through automation enables you to meet your regulatory obligations with greater ease

For more information please email info@trioptima.com or contact your local TriOptima office.

London
+44 20 7382 2200

New York
+1 646 744 0400

Singapore
+65 6372 8181

Stockholm
+46 8 545 25 130

Tokyo
+81 35511 6688

TriOptima (www.trioptima.com) is now part of CME Group.

As the world's leading and most diverse derivatives marketplace, CME Group (www.cmegroup.com) enables clients to trade futures, options, cash and OTC markets, optimize portfolios, and analyze data – empowering market participants worldwide to efficiently manage risk and capture opportunities. CME Group exchanges offer the widest range of global benchmark products across all major asset classes based on interest rates, equity indexes, foreign exchange, energy, agricultural products and metals. The company offers futures and options on futures trading through the CME Globex® platform, fixed income trading via BrokerTec and foreign exchange trading on the EBS platform. In addition, it operates one of the world's leading central counterparty clearing providers, CME Clearing. With a range of pre- and post-trade products and services underpinning the entire lifecycle of a trade, CME Group also offers optimization and reconciliation services through TriOptima, and trade processing services through Traiana.

All information contained herein ("Information") is for informational purposes only, is confidential and is the intellectual property of CME Group Inc and/or one of its group companies ("CME"). The Information is directed to Equivalent Counterparties and Professional Clients only and is not intended for Non-Professional Clients (as defined in the Swedish Securities Market Law (lag (2007:528) om värdepappersmarknaden)) or equivalent in a relevant jurisdiction. This Information is not, and should not be construed as, an offer or solicitation to sell or buy any product, investment, security or any other financial instrument or to participate in any particular trading strategy. The Information is not to be relied upon and is not warranted, either expressly or by implication, as to completeness, timeliness, accuracy, merchantability or fitness for any particular purpose. All representations and warranties are expressly disclaimed. Access to the Information by anyone other than the intended recipient is unauthorized and any disclosure, copying or redistribution is prohibited without CME's prior written approval. If you receive this information in error, please immediately delete all copies of it and notify the sender. In no circumstances will CME be liable for any indirect or direct loss, or consequential loss or damages including without limitation, loss of business or profits arising from the use of, any inability to use, or any inaccuracy in the Information. CME and the CME logo are trademarks of the CME Group. TriOptima AB is regulated by the Swedish Financial Supervisory Authority for the reception and transmission of orders in relation to one or more financial instruments. TriOptima AB is registered with the US National Futures Association as an introducing broker. For further regulatory information, please see www.nex.com and www.cmegroup.com.