

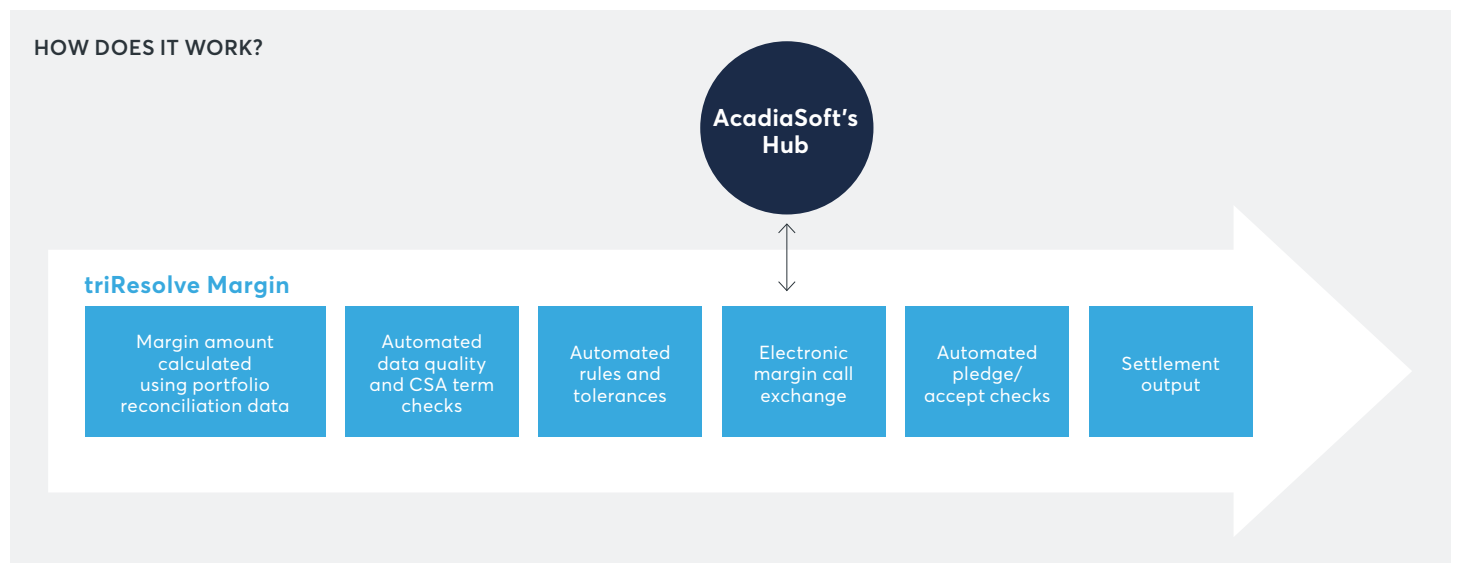
triResolve Margin

WEB-BASED COLLATERAL MANAGEMENT FROM THE MARKET LEADER

triResolve Margin reinvents the collateral management process. By leveraging triResolve, our portfolio reconciliation service used by over 2,000 firms, triResolve Margin enables clients to increase operational efficiency, save costs and adhere to regulation.

Unparalleled Efficiency

Collateral management has typically been fragmented, manual, and reliant on installed, inflexible software. The new market landscape requires a new approach. Utilizing portfolio reconciliation data, triResolve Margin is unique in its ability to automate the collateral management process. You simply set the rules and tolerances, triResolve Margin presents the exceptions. Where you have disputes, triResolve Margin shows you where in your portfolio you have meaningful differences and advanced analytics determine what is driving them.

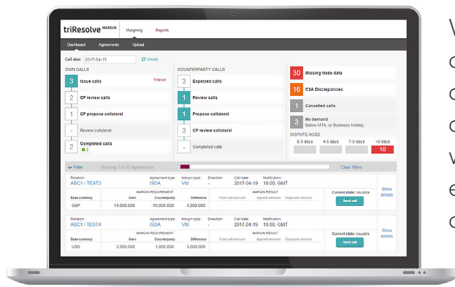


A Trusted Provider

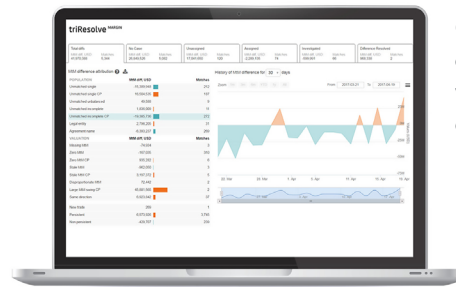
"Having portfolio reconciliation and our margin calculation in the same place just makes sense. triResolve Margin has provided us with the automation we needed to be able to focus more on our risk, rather than the process."

– Bank of Ireland

Unique Transparency



With full transparency of counterparty data the intuitive dashboard and workflow design empower new levels of automation.



Cutting edge analytics show you what is driving your disputes.

What Are The Benefits?



Cost effective

Our transparent pricing model is pay as you go with no hidden fees



Rapid onboarding

You can be up and running on our web-based service in a day with no installation required



Operational efficiencies

By automating processes that were traditionally manual, we enable you to focus resources on risk and compliance



Robust dispute resolution

Reconciliation analytics pinpoint where you have disputes and identifies what is driving them



Facilitates regulatory compliance

The intelligent exception-based process allows you to stay ahead of the regulation



Multiproduct coverage

Multi asset class and product support including Bilateral, Cleared, Repo and TBA

For more information please email info@trioptima.com or contact your local TriOptima office.

London
+44 20 7382 2200

New York
+1 646 744 0400

Singapore
+65 6372 8181

Stockholm
+46 8 545 25 130

Tokyo
+81 35511 6688

TriOptima (www.trioptima.com) is now part of CME Group.

As the world's leading and most diverse derivatives marketplace, CME Group (www.cmegroup.com) enables clients to trade futures, options, cash and OTC markets, optimize portfolios, and analyze data – empowering market participants worldwide to efficiently manage risk and capture opportunities. CME Group exchanges offer the widest range of global benchmark products across all major asset classes based on interest rates, equity indexes, foreign exchange, energy, agricultural products and metals. The company offers futures and options on futures trading through the CME Globex® platform, fixed income trading via BrokerTec and foreign exchange trading on the EBS platform. In addition, it operates one of the world's leading central counterparty clearing providers, CME Clearing. With a range of pre- and post-trade products and services underpinning the entire lifecycle of a trade, CME Group also offers optimization and reconciliation services through TriOptima, and trade processing services through Traiana.

All information contained herein ("Information") is for informational purposes only, is confidential and is the intellectual property of CME Group Inc and/or one of its group companies ("CME"). The Information is directed to Equivalent Counterparties and Professional Clients only and is not intended for Non-Professional Clients (as defined in the Swedish Securities Market Law (lag (2007:528) om värdepappersmarknaden)) or equivalent in a relevant jurisdiction. This Information is not, and should not be construed as, an offer or solicitation to sell or buy any product, investment, security or any other financial instrument or to participate in any particular trading strategy. The Information is not to be relied upon and is not warranted, either expressly or by implication, as to completeness, timeliness, accuracy, merchantability or fitness for any particular purpose. All representations and warranties are expressly disclaimed. Access to the Information by anyone other than the intended recipient is unauthorized and any disclosure, copying or redistribution is prohibited without CME's prior written approval. If you receive this information in error, please immediately delete all copies of it and notify the sender. In no circumstances will CME be liable for any indirect or direct loss, or consequential loss or damages including without limitation, loss of business or profits arising from the use of, any inability to use, or any inaccuracy in the Information. CME and the CME logo are trademarks of the CME Group. TriOptima AB is regulated by the Swedish Financial Supervisory Authority for the reception and transmission of orders in relation to one or more financial instruments. TriOptima AB is registered with the US National Futures Association as an introducing broker. For further regulatory information, please see www.nex.com and www.cmegroup.com.