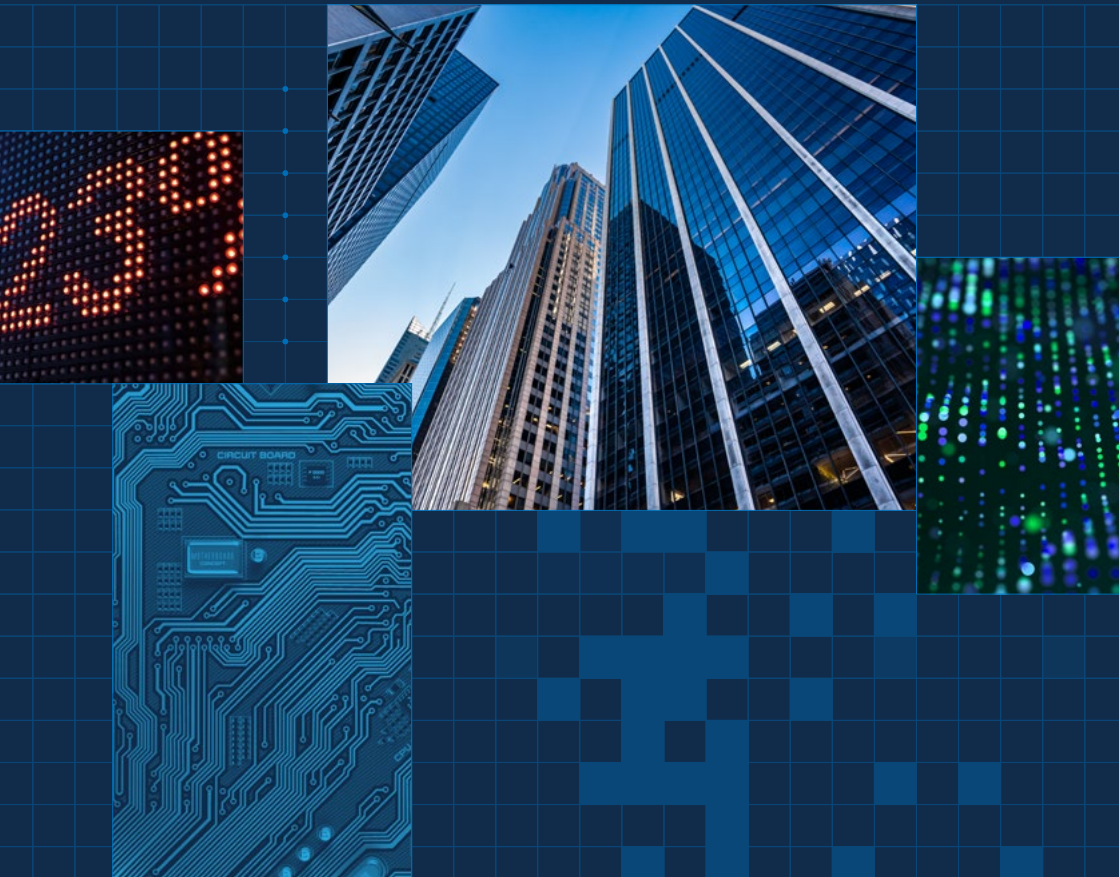


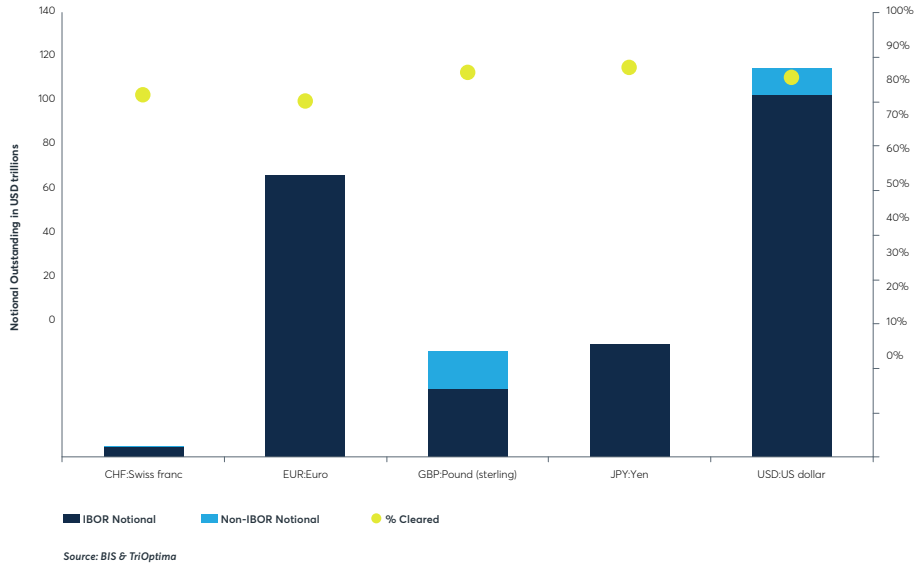
Benchmark Conversion

Alternative Benchmarks for Swap Risk



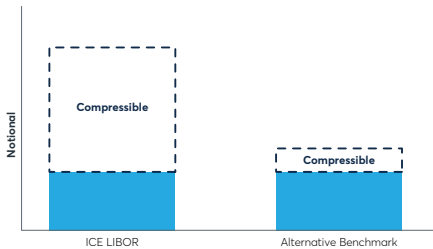
- In 2017, Andrew Bailey (UK FCA) announced that banks will no longer be required to contribute to ICE LIBOR fixings beyond the end of 2021.
- Across the top five currencies, 85% of outstanding ICE LIBOR swap exposure is cleared.

OTC IRS Notional by Currency, Index & Cleared %



Starting with compression ...

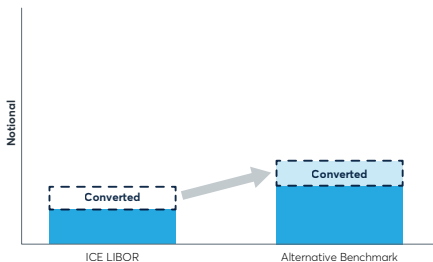
Maximize reduction of gross notional across ICE LIBOR swaps and the alternative benchmark



- Multilateral compression can help market participants to reduce their gross notional and line items while keeping their swap positions market risk neutral overall.
- In triReduce compression cycles, gross exposures are brought down towards each firm's core net risk position.
- Simultaneous compression in the alternative benchmark helps keep overall gross notional down throughout the conversion process.

... and adding conversion functionality

Convert remainder of ICE LIBOR swap exposure to the alternative benchmark



- A portion of the remaining ICE LIBOR swap exposure, that cannot be compressed through terminating trades or amending their terms, can be converted to the new benchmark through the introduction of risk replacement trades in the alternative reference rate, as part of the regular triReduce compression cycles.
- Each party sets constraints on outright risk, as well as the basis risk between the various ICE LIBOR term rate tenors and the alternative benchmark, providing each firm with certainty throughout the conversion process on their risk impact.
- Risk-based constraints allow each participant to control the amount of conversion taking place. Tighter limits will mean only termination of trades or amendment of terms take place, wider settings facilitate inclusion of risk replacement trades in a single cycle.
- Firms with illiquid or netted portfolios are included in the same conversion exercise, benefiting from the triReduce liquidity pool.
- Should alternative benchmark term rates become available, risk and basis tolerances can be applied to control conversion into any new alternative rates.

Key Features

- Will be available to all swap market participants in 2020
- A single unified process
- Expandable to all IBORS and CCPs
- Deep liquidity pool, proven process and established connectivity to CCPs and market infrastructure
- Participants retain control of their market risk
- Preserves CCP cash flow neutrality
- Can support multiple benchmarks and term rates, as required

If you are a market participant with cleared swaps, you are eligible.

BenchmarkConversion@trioptima.com



Regulations Asia – Outstanding Project of the Year
for Benchmark Conversion, triReduce

FOW Awards – Best New Product: Post Trade
for Benchmark Conversion

cmegroup.com

As the world's leading and most diverse derivatives marketplace, CME Group (www.cmegroup.com) enables clients to trade futures, options, cash and OTC markets, optimize portfolios, and analyze data – empowering market participants worldwide to efficiently manage risk and capture opportunities. CME Group exchanges offer the widest range of global benchmark products across all major asset classes based on interest rates, equity indexes, foreign exchange, energy, agricultural products and metals. The company offers futures and options on futures trading through the CME Globex® platform, fixed income trading via BrokerTec and foreign exchange trading on the EBS platform. In addition, it operates one of the world's leading central counterparty clearing providers, CME Clearing. With a range of pre- and post-trade products and services underpinning the entire lifecycle of a trade, CME Group also offers optimization and reconciliation services through TriOptima, and trade processing services through Traiana.

All information contained herein ("Information") is for informational purposes only, is confidential and is the intellectual property of CME Group Inc and/or one of its group companies ("CME"). The Information is directed to Equivalent Counterparties and Professional Clients only and is not intended for Non-Professional Clients (as defined in the Swedish Securities Market Law (lag (2007:528) om värdepappersmarknaden)) or equivalent in a relevant jurisdiction. This Information is not, and should not be construed as, an offer or solicitation to sell or buy any product, investment, security or any other financial instrument or to participate in any particular trading strategy. The Information is not to be relied upon and is not warranted, either expressly or by implication, as to completeness, timeliness, accuracy, merchantability or fitness for any particular purpose. All representations and warranties are expressly disclaimed. Access to the Information by anyone other than the intended recipient is unauthorized and any disclosure, copying or redistribution is prohibited without CME's prior written approval. If you receive this information in error, please immediately delete all copies of it and notify the sender. In no circumstances will CME be liable for any indirect or direct loss, or consequential loss or damages including without limitation, loss of business or profits arising from the use of, any inability to use, or any inaccuracy in the Information. CME and the CME logo are trademarks of the CME Group. TriOptima AB is regulated by the Swedish Financial Supervisory Authority for the reception and transmission of orders in relation to one or more financial instruments. TriOptima AB is registered with the US National Futures Association as an introducing broker. For further regulatory information, please see www.nex.com and www.cmegroup.com.